

Your guide to getting around the QEIMC



Issue #11 – June 2017
The latest developments at your QEIMC

Coffees, Cafes & Eateries



C3 | Coffee Biz @ Lions Eye Institute

Located at Lions Eye Institute, offering coffee, cakes and light meals. SMS your order for 4 coffees or more to 0487 755 315.
Mon - Fri 6.30am - 4.30pm

C4 | Charlies Garden Coffee Lounge

Offers breakfast, lunch and dinner options. Takeaway available.
E Block, Ground floor.
Mon - Fri 7.30am - 6.00pm
Sat - Sun 9.30am - 5.00pm
Public Holidays 10.00am - 3.00pm
T: 6457 3780

C5 | @Coffee Code

Offers coffee and cakes along with breakfast, lunch and dinner options.
Multi Deck Car Park, Ground Floor
Mon - Sat 6:30am - 5:00pm
T: 9381 3601

C5 | Express Zone

A convenience store offering a range of drinks, snacks, toiletries, medicines, greeting cards, newspapers and magazines.
Multi-Deck Car Park, Ground Floor
Mon - Sun 7.00am - 8.00pm
T: 9382 3737

C5 | Xpresso Code

Coffee, cakes and snack foods available.
Multi-Deck Car Park, Ground Floor
Mon - Fri 6.00am - 6.00pm
Closed Sat
Sun 6.30am - 5.00pm
T: 9381 5515

D3 | Coffee Anatomy

Offers coffee & boutique beverages, breakfast, nutritious lunch & catering options (cater for dietary requirements) with a variety of cakes & slices including gluten free options.
Harry Perkins Institute of Medical Research, Ground Floor (QQ Block)
Mon - Fri 7:00am - 4:00pm
www.coffeeanatomy.com
T: 6151 0771
E: mail@coffeeanatomy.com.au

D3 | Recharge @ Charlies

Located along Watling Walk (near J Block), offering coffees and "healthy" snacks and sandwiches.
G Block, Ground Floor.
Mon - Fri 6.30am - 7.00pm

D3 | Rejuvon8 Café

Located 8th floor G Block, offering make your own pizzas, sandwiches, salads and coffees.
Mon - Fri 6.30am - 7.00pm

Flowers & Gifts

C3 & D4 | Auxiliary Shops

Run by volunteers with all proceeds donated to Sir Charles Gairdner Hospital, the Auxiliary shops offer conveniences, gifts and takeaway snacks and drinks.
Ground Floor, E Block (C3).
Mon - Fri 8.00am - 4.00pm **T: 6457 3790**
Ground Floor, G Block (D4).
Mon - Fri 8.00am - 5.00pm
Sat - Sun 8.30am - 4.30pm **T: 6457 3085**

Banking Facilities

C3 & D3 | ATMs

ATM services for Westpac and Bank of Queensland are located on Watling Walk. A Suncorp ATM is available in Xpress-Zone (Multi Deck Car Park, Ground Floor).



Optic Care

D3 | Lions Optic

Lions Optic provides a full optometric service for all. Services include comprehensive eye testing, medicare bulk billing, referrals to eye specialist, contact lens dispensing. A great range of budget and designer frames. Discounts available to Seniors and Pensioners.
A Block, Ground Floor.
Mon - Fri 8.30am - 5.00pm
T: 9381 3860

Pharmacy News Agency & Post Office

C3 | Medical Centre Chemist

Your one stop for all your medical, postal and newsagency needs. Offers a full postal service including banking facilities (excluding ANZ and Westpac).
E Block, Ground Floor.
Mon - Fri 7.00am - 5.00pm
Saturday 7.00am - 2.00pm
T: 6457 3729



C4 | SCGH Outpatient Pharmacy

Dispensing for all SCGH outpatients.
E Block, Ground Floor.
Mon - Fri 8.30am - 5.00pm
T: 6457 2335

Fitness

D2 | Social Club Gymnasium

Located in V Block, the Social Club Gymnasium offers a range of activities including circuit training, cardio, weight lifting and yoga to all QEIMC employees. Enquiries to join:
Mon - Fri 10.00am - 2.00pm
T: 6457 3151

Out Of Hospital Care

A4 | The Niche

The Niche is home to a number of organisations, such as the Independent Living Centre, Cystic Fibrosis, Parkinsons Western Australia, Centre for Neurological Support and many many more.



C3 | Solariscare

SolarisCare aim to improve the quality-of-life of cancer patients and their carers by providing the support to cope with the emotional and physical side effects of cancer diagnosis. SolarisCare offers free complementary therapies, support and information. Mon - Fri 9.30am - 4.30pm
T: 6383 3475



Parking & Travelling To Qeilmc

C4 | Travelsmart Junction

Having trouble travelling to QEIMC? Visit the TravelSmart Junction for information on your alternative ways to travel to QEIMC.
E Block, Ground Floor.
Mon - Fri 8.00am - 4.00pm
T: 6457 2927

C4 | SCGH Patient Transport

Visit the Patient Transport desk to see if you qualify to use the Voluntary Patient Transport Service provided by Sir Charles Gairdner Hospital.
E Block, Ground Floor.
Mon - Fri 7.00am - 3.30pm
Closed Sat, Sun & public holidays
T: 6457 6655

D2 | Parking Branch

Find out everything you need to know about parking, parking permits, parking fees and infringements.
R Block, 2nd Floor.
Mon - Fri 8.00am - 3.00pm
T: 6457 2488 or 6457 1787

QEIMC Buggies

A free buggy service driven by volunteers is available to transport visitors and patients around the QEIMC. This service is available Monday - Friday 9.00am - 4.00pm (excluding public holidays).
Call 0481 438 731 for the QEIMC buggy

Childcare

C1 | Health Services Family Association

Offers childcare services before and after school periods, and vacation care to children aged 4 to 15. Run by qualified teacher and supported by early childhood educators. Located 22 Verdun Street. Office contactable from 6.45am to 6.00pm.
hsfchildcare@health.wa.gov.au
T: 6457 3238

C5 | Altitude Childcare

Childcare services for children aged 8 weeks to 5 years, available between 6:30am and 6:30pm. Located on the 6th floor of the Multi Deck Car Park.
altitudechildcare@health.wa.gov.au
T: 6457 3812

Patient Support

D3 | The Patient Liaison Service (PLS)

The Patient Liaison Service (PLS) is the central point for coordination of patients' complaints, compliments and feedback within Sir Charles Gairdner Hospital (SCGH). PLS are available to liaise with SCGH staff, patients and their families and carers to provide support and advice.
A Block 3rd floor Mon - Fri 8.30am - 4.30pm
T: 6457 2867
SCGHPatientLiaisonService@health.wa.gov.au
(PLS do not manage complaints and feedback relating to parking issues)

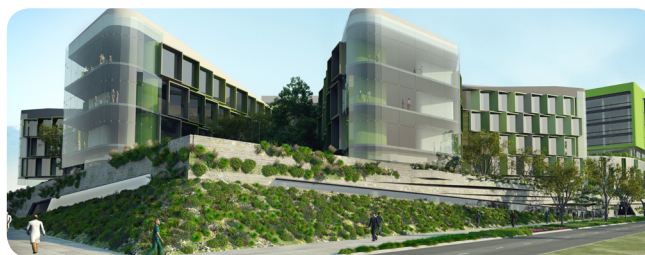
Recent QEIMC Developments

C2 | Ralph and Patricia Sarich Neuroscience Research Institute



This five-storey building is home to five of WA's premier neurological research organisations.

E5 | Perth Children's Hospital



Perth Children's Hospital will have 298 beds and will replace Princess Margaret Hospital, providing paediatric care for children and adolescents.

About

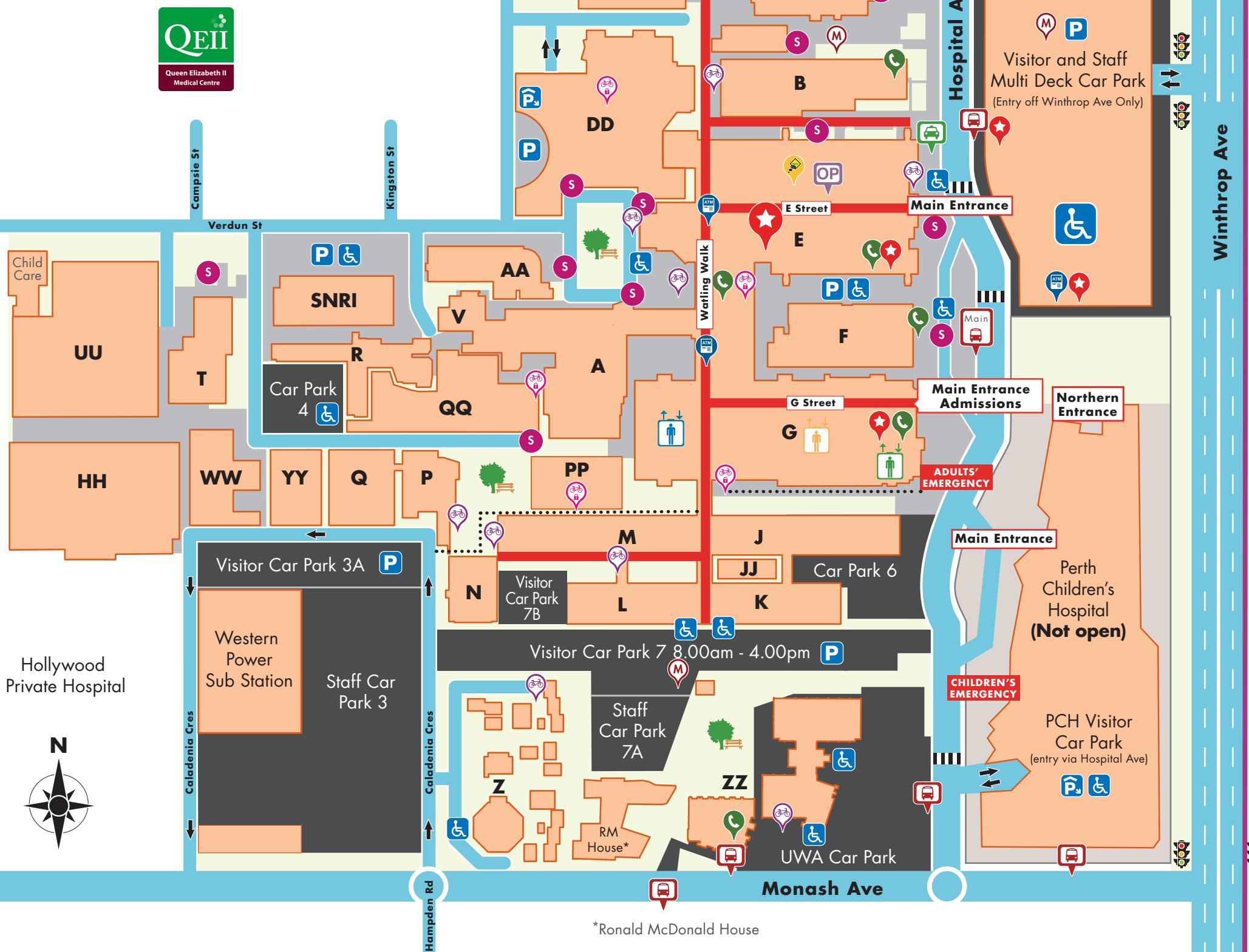
The QEIMC Trust is a statutory authority and is the landlord of the QEIMC site. Its main responsibility is for the development, control and maintenance of the Reserve.
For further information click on to our website
www.qeimc.health.wa.gov.au

Thank you for helping to keep the Queen Elizabeth II Medical Centre **SMOKE FREE**. We appreciate your cooperation.



SCGH Switchboard
T. 6457 3333
QEIMC Trust
Hospital Avenue, Nedlands, WA 6009.
T. 6457 4085
qeimctrust@health.wa.gov.au
www.qeimc.health.wa.gov.au

Your guide to getting around the QEIMC



Key

- TravelSmart Junction
- Bicycle Parking
- Staff Secure Bicycle End of Trip Facility
- Visitors Car Parking
- Underground Car Parking
- Accessible Parking
- Motorcycle Parking
- Telephone
- ATM
- Taxi
- Bus Stop
- Outpatients Clinics - Areas 1 to 6
- Major Elevators: Blue
- Major Elevators: Green
- Major Elevators: Gold
- Shops
- Post Office, Cafe, Shops & Chemist
- Set down (Drop Off Bays)
- Undercover Access
- Main Roads
- Bicycle Path
- Road Areas
- Pleasant Rest Area
- Playground
- Bike Entrance
- Crosswalk

Transport About

Issue #11- June 2017

QEIMC GUIDE

The QEIMC Guide can be found throughout the medical centre. If you have a business, service or an event that you would like to promote in the guide please phone 6457 4085 or email MCTravelSmart@health.wa.gov.au

BUS ROUTES AND TRAIN STATIONS

BUSES STOPPING AT QEIMC

24 & 25 East Perth to Claremont Train Station

950 Morley Bus Station, Wellington St, Elizabeth Quay Bus Station to QEIMC

97 Subiaco Train Station to UWA (some services to Leederville Station).

998 & 999 Circle Route - travels in a circle outside the city

103 Fremantle to East Perth

TRAINS

Subiaco Train Station - catch 97 bus

Stirling Train Station - catch 999 bus

Shenton Park Train Station - catch 999 bus

Elizabeth Quay Station - catch 950 bus or walk to St Georges Terrace and catch 24, 25 or 103 bus

For more information on public transport in the area visit www.transperth.wa.gov.au or call the Transperth Hotline on 13 62 13.

What is where

- A** Altitude Childcare (**Multi Deck Car Park, C5**)
- B** Bereavement Viewing Room (**JJ Blk, E4**)
- C** Cancer Centre (**DD Blk, B3**), Chapel (**E Blk, C4**), Charlies Foundation for Research (**E Blk, D3**) Crawford Lodge (**Z Blk, F3**), Cystic Fibrosis WA (**CC Blk, B4**)
- D** Discharge Ward (enter from Rose Garden) (**E Blk, C4**)
- E** Education and Development - SCGH (**Q Blk, D2**), Emergency Dept. - SCGH (**G Blk, D4**)
- F** F.J. Clark Lecture Theatres (**P Blk, D2**)
- H** Haematology Clinic (**E Blk, C4**), Harry Perkins Institute of Medical Research (**QQ Blk, D2**), Health Services Family Association Childcare (**C1**)
- I** Intensive Care Unit - SCGH (**G Blk, D4**), Independent Living Centre of WA Inc (**CC Blk, B4**)
- K** Keogh Institute for Medical Research (**C Blk, B4**)
- L** Lions Eye Institute (**AA Blk, C3**)
- M** Mental Health Unit (**UU Blk, D1**), Multi Deck Car Park (**C5**)
- N** The Niche (**CC Blk, B4**), Neurological Council of WA (**CC Blk, B4**), (Ralph and Patricia Sarich) Neuroscience Research Institute (**RR Blk, D2**), NMHS Executive Offices (**T Blk, D1**), NMHS Redevelopment (**T Blk, D1**)
- O** Occupational Safety and Health (**R Blk, D2**), Outpatients Clinics Areas 1-6 (**E Blk, C4**), Oral Health Centre of WA (**ZZ Blk, F4**), Oral Health Centre of WA Annexe (**E Blk, C3**)
- P** Parking Dept. (**R Blk, D2**), PathWest Pathology (**PP Blk, D2**), PathWest Patient Reception & Specimen Collection (**J Blk, E4**), PathWest South (**K Blk, E4**), Patient Appliance Centre (**E Blk, C4**), Patient Liaison Service (**A Blk, D3**), Patient Transport (**E Blk, C4**), Perth Children's Hospital (**KK Blk, E5**), Pharmacy (SCGH Outpatient) (**E Blk, C4**), Physiotherapy (**A Blk, D3**), Post Graduate Medical Education (**E Blk, C4**), Psychiatric Unit - SCGH Ward D20 (**D Blk, B3**)
- R** Rehabilitation and Aged Care (enter from Hospital Ave) (**C Blk, B4**), Respiratory Medicine (**B Blk, B4**), Retail Centre (**E Blk, C4**), Ronald McDonald House (**F3**)
- S** Sarich Neuroscience Research Institute (SNRI) (**RR Blk, C2**), Solaris Care (**DD Blk, C3**), Security Dept., SCGH (**A Blk, D3**), State Head Injury Unit (**E Blk, C4**)
- T** Telethon Kids Institute (**PCH, D5**), Theatre Block (**G Blk, D4**), TravelSmart Junction (**E Blk, C4**)
- U** UWA - Medical Library (**ZZ Blk, F4**), School of Medicine and Pharmacology (**M Blk, E3**), School of Pathology and Laboratory Medicine (**L & M Blks, E3**), School of Primary, Aboriginal and Rural Health Care (**N Blk, E3**), School of Surgery (**M Blk, E3**)
- W** Wards - SCGH Main (G41-G75) (**G Blk, D4**)

Parking

The main visitors car park is the Multi Deck facility accessible from Winthrop Avenue. The adjacent visitor car park 1 is only accessible through the Multi Deck car park.

Where to find us

